

Rotary union

6 Channels

Typ DDF-6

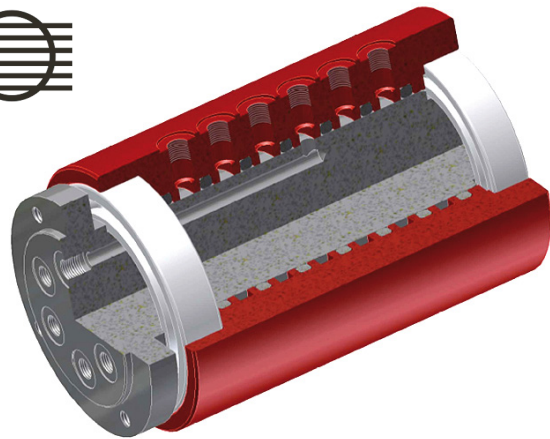
General data

Pressure*: -0,9 bar / 16 bar
on request: 100 bar

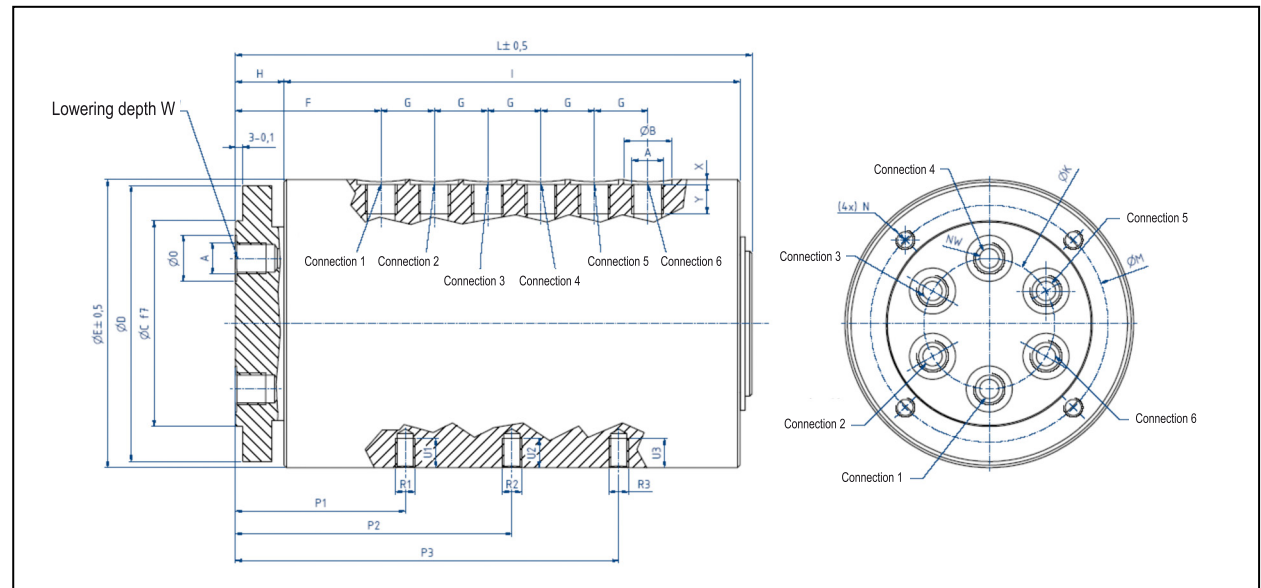
Temperature*: 0°C / +80°C
enlarged temperature range on request

Seal material: NBR
other seal materials on request (e.g. FKM)

Art.-No.	Type	Channels	Flow (per channel)	Weight	Middle Torque**	Rotation* (rpm)
ZK5493	DDF-6-M5	6	150 l/min	3,5 kg	10 Nm	200
ZK5510	DDF-6-1/8	6	600 l/min	6,8 kg	25 Nm	120
ZK5534	DDF-6-1/4	6	1.300 l/min	10,5 kg	30 Nm	100
ZK5512	DDF-6-1/2	6	3.500 l/min	25,5 kg	40 Nm	80



All Rotary unions are available in stainless steel
(Art.-No.... -H)



Art.-no.	A	B	C	D	E	F	G	H	I	K	L	M	N	O	NW	P1	R1	U1	P2	R2	U2	P3	R3	U3	W	X	Y
ZK5493	M5	9	50	69	79	52	16	20	142	30	166	59	M6	9	3	67	M8	9	115,0	M8	9	-	-	-	0,5	1,0	5,5
ZK5510	G1/8"	16	72	99	109	56	18	20	160	44	186	84	M8	16	6	60	M8	12	100,0	M8	12	-	-	-	0,5	1,5	9,0
ZK5534	G1/4"	20	85	114	119	60	22	20	188	54	213	98	M8	19	8	70	M8	12	114,0	M8	12	158	M8	12	0,5	2,0	12,0
ZK5512	G1/2"	28	113	144	159	62	33	23	253	79	284	126	M10	28	15	110	M8	12	149,5	M8	12	186	M8	12	0,5	2,8	14,0

Rotary union

General information

Application

Rotary unions distributors are used as a connection between stationary and rotating machinery elements.

The 1-Channel-series (DDF-1) offers an optimum in flexibility for your installation, because of its radial and axial exit.

The multiple series offers the corresponding number of channels for the transmission of medium. Different or several media can be transmitted through (requires clarification with Konstandin GmbH).

Assembly / Usage

The fastening bores of the rotary union can be used to lock the unit against rotation, but they can not be used to tie it.

Fast oscillate motions (that means, changes in direction less than 2 sec.) are reducing the life time of about 50 %.

In order to avoid an overheating of the rotary union (>80°C / >100°C – depending on version) the flow quantity of the medium has to be sufficient all time.

At passage of different or several media through the rotary union an outleak line will be necessary for security. Please contact our Technical Division.

Special constructions are generally possible.

Service

All rotary unions are checked before shipment. This inspection ensures the faultless condition of the unit when receiving it, so that it can be installed on time.

General information

Pressure*	-0,9 bar / 16 bar on request: 40 bar 1 Channel (Type DDF-1) 100 bar multiple series other pressure range
Temperature*	0°C / +100°C 1 Channel (Type DDF-1) 0°C / + 80°C multiple series enlarged temperature range on request
Medium	compressed air, vacuum on request: hydraulic oil, water, other / different media
Filtering	liquid media: 5 µm gaseous media: 30 µm
Material	housing: aluminium - red anodized optionally stainless steel (Art-No.... -H) spindle: stainless steel

Warranty

Konstandin GmbH guarantees the faultless condition concerning material and fashioning of the delivered products. The warranty period and responsibility are established in legal rights.

We give a 6-month guarantee (from delivery) for sealing components and expendable parts when using the rotary unions due to our operating conditions.

The responsibility for resend rotary unions is explicitly limited on replacement and repair of the unit or parts of it, which are definitely faulty.

Konstandin GmbH is not responsible for damaging after effects, which can result out the usage of such faulty elements.

The warranty goes out in case the rotating unit has been dismantled, changed or damaged because of improper treatment.